

UNITRAY

HOT WATER UNIT

SAFE TRAY SYSTEM

HOT WATER UNIT
INSTALLATION
MADE EASY

UNITRAY
Unit 3/11 Leda Drive
Burleigh QLD
AUSTRALIA 4220
m: 0411 175 509
e: info@unitray.com.au
w: www.unitray.com.au
ABN: 51 123 413 187

IMPORTANT INSTRUCTIONS

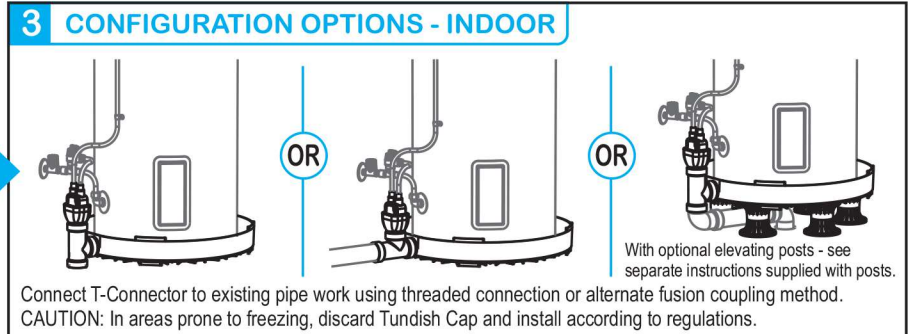
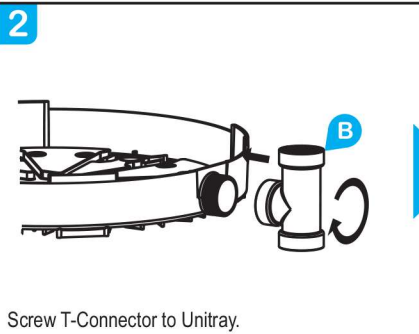
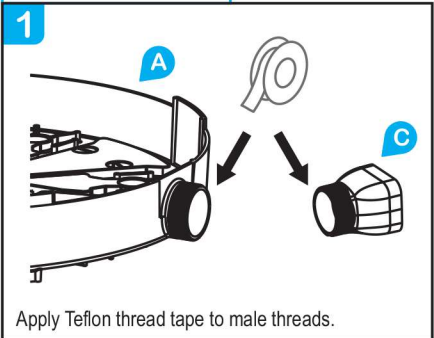
FOR INSTALLATION OF SMALL, MEDIUM & LARGE UNITRAY HOT WATER INSTALLATION SYSTEMS.
INSTALL AS PER LOCAL AND NATIONAL REGULATIONS.
MUST BE INSTALLED BY A SUITABLY QUALIFIED PERSON/LICENSED PLUMBER.

Select the Correct Size Unitray for your Hot Water Unit:
- Small for HWU up to Ø405mm (up to 50L)
- Medium for HWU up to Ø532mm (up to 180L)
- Large for HWU up to Ø640mm (up to 315L)
Maximum Weight Capacity = 400kg (all sizes)

PARTS LIST



INSTRUCTIONS



ALTERNATE FUSION COUPLING METHOD

